



# The Sprinter

Genuine accessories and Collection

Mercedes-Benz



# 5.30 a.m. - 6°C. 8 metres from target

**The challenges of a long working day hold no fears** for the confident, sure-footed new Sprinter from Mercedes-Benz. Helping it rise to the occasion is a van concept of unprecedented flexibility and variety.

The Sprinter already offers almost infinite possibilities. But if you want to take things a little further, these pages will offer you some useful tips and suggestions. After all, there are no limits to individuality. Nor to the lengths we go to in our aim of offering you unlimited - and very personal - satisfaction.

## CONTENT

### COCKPIT

Heating and climate control	3
Comfort and design	4
Seat covers and mats	6
Infotainment	8
Communication	10

### CONTOUR

Front	12
Manoeuvring and towing	14
Wheels	16

### CARGO

Roof rack systems	18
Load compartment and transportation	20

### COLLECTION

#### Parameterisable special module

For retrofitting and modification of special electrical components and systems of all kinds, this special module provides a defined and secure interface (10 inputs, 20 outputs) with the vehicle's electronic system.

Order no. B6 656 0734

5.31 a.m. +20°C. Raring to go



#### **Air conditioning system**

Select your temperature, at the touch of a button, and the sensor-controlled air conditioning system will maintain it – both in summer and in winter. The system also has a dehumidifying effect, which helps keep the windows clear. And with its integrated air filter, it also protects against dust and pollen. The air conditioning system can be fitted at a specialist workshop, for example your Mercedes-Benz service centre.

Order no. B6 656 0770

5.35 a.m. Welcome to your mobile office



**Coolbox**

Even on really long days or long journeys the coolbox, made of hygienic, easy-to-clean plastic, provides constant and dependable cooling performance - thanks to the on-board 12-volt power supply. The box can be firmly secured in the load compartment with the aid of the special strap system. It's also easy to carry, using the handy carry straps. The coolbox has a volume of 16 litres. Order no. B6 656 0300

**Stowage box in twin co-driver's seat**

The stowage box, made of impact-resistant plastic, fits flush into the seat base frame and provides generous stowage space and organisation in the left-hand part of the seat base. A divider is supplied and you can also insert tabs. The stowage box prevents damage to the inside of the seat base and prevents small items from getting lost. The stowage box is simple to install - just drop it into place in the seat base. The flush-fitting design means that the stowage box is self-securing. Order no. B6 656 0921





#### Cockpit trim

In perfect trim: two alternative trim packages are available for the cockpit highlights and the centre console trim panel. These trim components blend smoothly with the overall cockpit styling and lend the interior an individual feel. Both versions - black walnut [1] and the silver 3D paint finish [2] - are made of high-grade plastic. They are also easy to fit: simply take out the standard trim parts and swap them for the accessories.

Order no: see price list

#### Cruise control

Cruise control makes the driver's job easier, especially when it comes to obeying speed limits, but also when driving long distances or towing a trailer. The selected speed is stored and maintained - although manual intervention is of course possible at any time.

Order no. B6 656 0975



#### Writing surface

This practical writing surface simply hooks over the steering wheel. It comes with handy clips for holding your papers.

Order no. B6 656 0388



#### Office bag

This elegant vinyl briefcase-cum-laptop bag converts into a portable office in moments. The office bag can be strapped around the backrest using the integrated belt, while a further belt wraps round the neck rest, allowing the bag to remain open while driving. This way you can keep everything from your mobile phone to a DIN A4 writing block conveniently close to hand.

Order no. B6 656 0417



#### Litter bag

Dispose of litter easily and elegantly in this 5-litre vinyl bag. The hygienic liner bags are easily removed. Take out one bag and the next bag moves into position automatically.

Order no. B6 656 0320



#### Spectacles case

The spectacles case provides first-class protection for your spectacles - and quick access via a large opening.

Order no. B6 626 0275

6.45 a.m. Time for breakfast. No messing!

COCKPIT

SEAT COVERS AND MATS



**Protective covers**

Just in case: the robust oil and dirt-repellent protective covers are easy to fit and can be used either as a temporary measure, when visiting the workshop, or permanently, for example on the construction site.

See price list for order no.



### 1 | Rep floor mats

The custom-fitting, hard-wearing, easy-to-clean rep floor mats are fitted with a sewn-in velcro fastener that prevents them from sliding around the floor. The exclusive Sprinter lettering greets you every time you step on board.

See price list for order no.

### 2 | Velour floor mats

The soft velour floor mats, with their Sprinter lettering and their custom fit to prevent sliding, create an elegant impression on entering the vehicle. Extensive coverage of the footwell creates a comfortable, cosy feel.

See price list for order no.



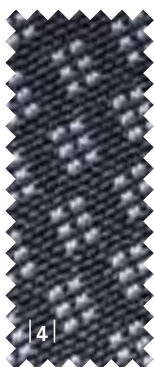
### Rubber floor mats

Amazing attention to detail: the rubber floor mats, made of robust, dirt-repellent natural rubber, fit flush with the interior of the vehicle. Zip fasteners securely connect adjacent sections of mat. This provides extensive floor coverage with no intervening gaps, and prevents the mats from sliding around. At the same time the mats can also be easily removed for cleaning.

See price list for order no.



*Child safety products are available as part of the Mercedes-Benz Child Safety range. For more information, please consult your Mercedes-Benz service centre.*



### 3 | "Alcanta grey" seat covers

Luxurious protection: with their velvety suede finish and elegant design, the Alcanta range of seat covers provide enhanced comfort without compromising the intelligent seat functionality.

See price list for order no.

### 4 | "Brasao black" seat covers

Superb fit, regular design: the colour and design of these seat covers are modelled on those of the original seats. They are available for almost all seat versions. At the same time, special functions like the integrated table on the twin co-driver's seat, and the Isofix attachment system, are retained in full.

See price list for order no.



#### MP3 radio Sound ONE

Exclusive sound: with 4 x 45 W output for radio, CD or MP3 (can be controlled from the multifunction steering wheel). The detachable anti-theft front panel incorporates an AUX port for your MP3 player. Variable button illumination colour.

Order no. B6 656 0722



#### Sound 5 radio

CD radio (can be operated via multifunction steering wheel) with 25 station presets and connection for MP3 CD changer or MP3 player. The Sound 5 comes with ID3 track display for the CD changer.

Order no. B6 656 0866



#### Sound 50 APS navigation

All-inclusive system: the Sound 50 APS offers dynamic routing capability (RDS/TMC) for optimal navigation, easy telephoning in conjunction with an integrated hands-free system and rich CD and radio sound. It can be controlled from the multifunction steering wheel.

Order no. B6 656 0744



#### 1 DIN CD changer

The six-disc MP3-capable CD changer is seamlessly integrated in the cockpit and can be controlled from the multifunction steering wheel.

Order no. B6 656 0798



#### CD box

Safely stored and always at your fingertips: the CD box provides protection against dust and sunlight for up to four CDs.

Order no. B6 626 0221



#### MP3 CD changer

The (six-disc) MP3 CD changer is ID3-compatible, can read CD-R/RW and can be controlled from the multifunction steering wheel.

Order no. B6 656 0580

#### Connection kit for portable MP3 players

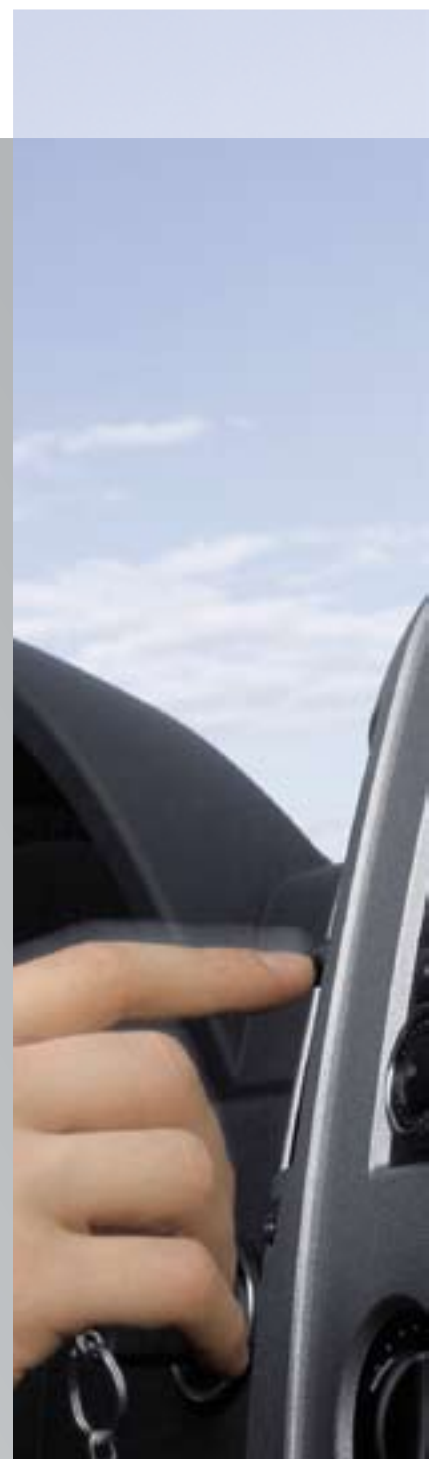
Easily retrofitted AUX port for external playback devices like MP3 players or portable CD players.

(for Sound 5)

Order no. B6 656 0107

(for Sound 20/50 APS/COMAND)

Order no. B6 656 0108



## 7.34 a.m. Firmly on track



### COMAND APS navigation

Car hi-fi and intelligent navigation technology rolled into one system. The twin tuner with 4 x 40 W amplifier gives superb sound performance, while a 6.5" colour display and integrated drive (audio/navigation DVD) keep the driver on track at all times. A connection for a CD changer is provided. COMAND can be controlled from the multifunction steering wheel.

Order no. B6 656 0747

*Flexible entertainment: the swivelling reversing camera monitor can also be connected to a portable DVD player. How about a film? More on page 14.*



### Tachograph

This type of tachograph is mandatory under EU law for vehicles that are registered as commercial vehicles and whose gross weight exceeds 3.5 t, and also for vehicles carrying 9 passengers (plus driver) or more. It provides tamper-proof recording of speeds and rest times. The data is rapidly and easily acquired and can be electronically evaluated. Outside the EU, the modular tachograph can be used.

#### Digital tachograph

Order no. B6 656 0870/71

#### Modular tachograph

Order no. B6 656 0874

#### Wiring

Order no. B6 656 0872/73

8.48 a.m. Hand on the wheel,

COCKPIT

COMMUNICATION



#### **Hands-free system (integrated)**

Communicate in comfort: the integrated hands-free system is compatible with all standard commercial mobile phones. It can also be conveniently operated from the optional multifunction steering wheel. In this case the phone directory and other functions are displayed in the instrument cluster. And since it's possible to change to a different mobile phone simply by changing the cradle, the system is also future-proof.

Order no. B6 656 0795

# ear to the ground



## Mobile phone cradles

Suitable cradles are available for most current mobile phones. In every case you're assured of top sound quality and advanced ergonomics. And you don't need to visit a workshop for fitting.

Mobile phone cradles provide the link between your mobile phone and the phone console. To start using a Mercedes-Benz hands-free system with ex-works pre-installation for a mobile phone, all you need is the correct mobile phone cradle.

To retrofit a hands-free system, you need the mobile phone retrofit kit, a mobile phone console and a cradle that matches your particular model of mobile phone.

See price list for order no.

## Cradle with function buttons

Innovative communications: the mobile phone cradles have been modified to include convenient extra functions for drivers who use the networked hands-free system. Two easy-to-use function buttons are integrated in the cradle base: the "Service 24h" button enables you to contact one of our breakdown service centres at any time from almost anywhere in Europe, while the "\*" button allows you to program any frequently used number as a speed-dial number.

See price list for order no.



## Hands-free system (non-integrated)

For all drivers wishing to operate their mobile phone with Sound ONE, Sound 5 or the radio pre-installation, the universal hands-free system is easy to view and simple to fit.

Order no. B6 656 0796

# 9.02 a.m. The new day's looking good

CONTOUR

FRONT



### Spare bulb box

Space-saving and close to hand: the spare bulb box contains a full set of standard bulbs.

Order no. B6 656 0805

### 1 | Chrome highlights on radiator grille

Brightly embellished: the bright chrome radiator grille highlights add further appeal.

Order no. B6 656 0948



| 2 |

| 3 |

## 2 | Exterior sun visor

A glaring improvement: the exterior sun visor prevents dazzle even when the sun is low in the sky - but without restricting the driver's field of view. It also emphasises the Sprinter's sporty front-end appearance.

Order no. B6 656 0920

## 3 | Side window wind deflector

When the window is ajar, the custom-fitting wind deflector prevents dust, moisture and even insects from entering the vehicle, and prevents fogging of the windows. Its draught-inhibiting function brings further comfort benefits.

Order no. B6 656 0104



## Roof air deflector

Attractive and effective: the roof air deflector for Sprinter vans with a box body or a platform body with tarpaulin not only emphasises the sporty design of the vehicle, its aerodynamic shape also reduces drag by up to 28%. Wind noise and fuel consumption are reduced significantly. Plus it makes a great advertising space - for your company name, for example.

See price list for order no.



## "Black Line" tail light

A sporty finish: enhance the appearance of your Sprinter by accentuating the rear end with "Black Line" darkened tail light units.

*Left tail light unit*

Order no. B6 656 1007

*Right tail light unit*

Order no. B6 656 1008

# 11.52 a.m. Looking ahead - even in reverse

CONTOUR

MANOEUVRING AND TOWING



## Reversing camera

Systematically coordinated innovation: the reversing camera assists the driver right from the start of the reversing manoeuvre. The camera is activated automatically, as soon as reverse gear is engaged. There's also a built-in microphone, so you can not only see but hear what's going on behind the vehicle. The camera image is conveniently displayed either on the COMAND display or on the reversing camera monitor.

Order no. B6 656 0808

## Monitor for reversing camera

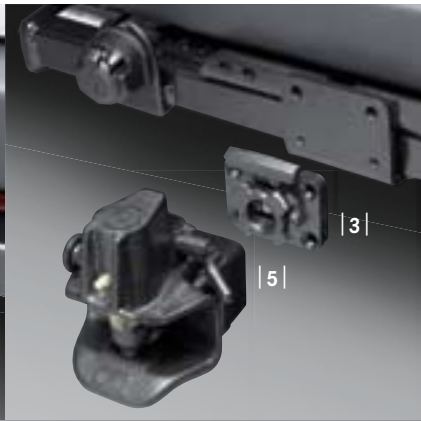
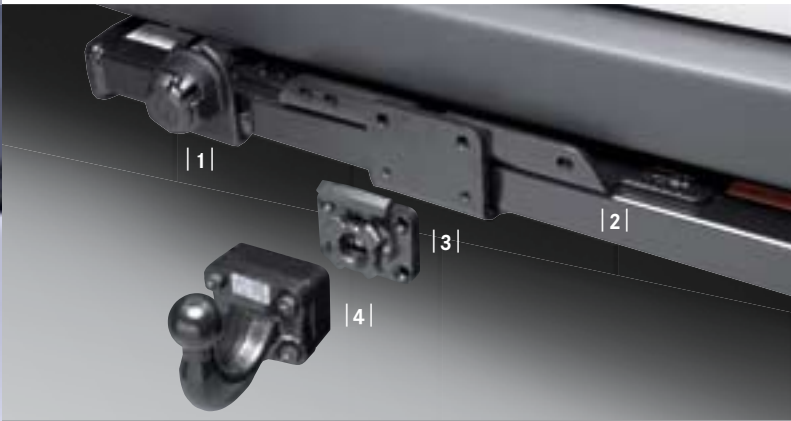
Multifunctional: the tilt-and-swivel reversing camera monitor is optimally adjustable. The 7" TFT monitor is automatically activated when the vehicle goes into reverse. The display and volume can be intuitively controlled using the buttons on the front side of the unit. During rest breaks, the monitor can be connected to a portable DVD player. The monitor is pre-fitted in the stowage tray and can be quickly and easily extended and retracted.

Order no. B6 656 0809

## Wiring for reversing camera

If you don't have pre-installation for the reversing camera, then not to worry. With the special installation kit, you still don't need to miss out on this system. (Not illustrated)

Order no. B6 656 0840



**Trailer coupling**

Our range of trailer couplings allows you to choose between various system versions and components to suit your individual requirements. Maximum towing capacities range from 2.0 to 3.5 t, with maximum drawbar loads of up to 140 kg.

**1 | Trailer wiring kits**

Lighting and signalling systems for your trailer.  
See price list for order no.

**2 | Cross-member**

Basis for fitting fixed and detachable (Variobloc) ball-head or jaw-type trailer couplings.  
See price list for order no.

**3 | Variobloc detachable trailer coupling system**

Robust and flexible: with Variobloc, swapping between different trailer couplings is never a problem.  
Order no. B6 684 8912

**4 | Detachable ball head for Variobloc system**

Order no. B6 656 0895

**5 | Detachable jaw coupling for Variobloc system**

Order no. B6 684 8916

**Ball-type trailer coupling (complete system)**

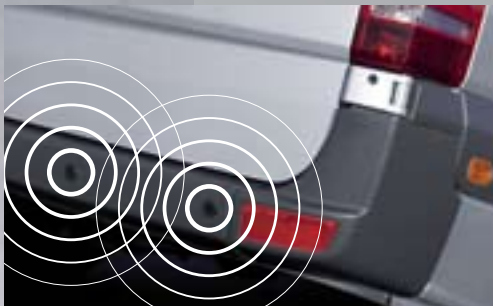
The complete system has the ball head already welded to the cross-member. (Not illustrated)  
See price list for order no.

**Ball head for trailer coupling (fixed)**

The ball head bolts on to the cross-member. (Not illustrated)  
Order no. B6 656 0896

**Jaw for trailer coupling (fixed)**

The jaw bolts on to the cross-member. Can be swapped for the fixed ball head. (Not illustrated)  
Order no. B6 684 8916



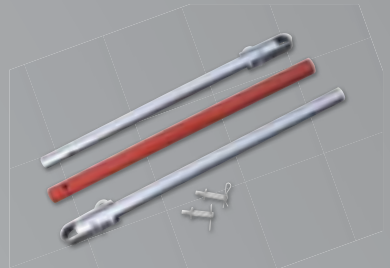
**Ultrasonic reversing aid**

The reversing aid assists the driver when reversing by ultrasonically detecting obstacles up to a distance of 1.60 metres behind the vehicle. Audible signals aid safe manoeuvring and parking. The reversing aid retains its functionality even when a trailer coupling is fitted.  
Order no. B6 656 0666



**Tow rope**

Provides robust break-down assistance. Can be used on any vehicle with a gross combination weight not exceeding 4 t.  
Order no. B6 656 0634



**Tow rod**

Pulling power: the multi-section steel tow rod ensures smooth towing. It can be used on any vehicle with a gross combination weight not exceeding 3.5 t.  
Order no. B6 758 0013

# 12.04 p.m. Style and security for your wheels

CONTOUR

WHEELS



## 16" light-alloy wheel

High-quality aluminium six-spoke wheel, painted brilliant silver.

Wheel size: 6.5 J x 16 ET 62

Tyre size: 235/65R 16C

Order no. B6 656 0389



## 17" light-alloy wheel

A gleaming set: seven-twin-spoke wheel in high-quality aluminium, painted brilliant silver.

Wheel size: 6.5 J x 17 ET 62

Tyre size: 235/60R 17C

Order no. B6 656 039



## Rim lock set

Can only be unlocked with the coded key: One rim lock per light-alloy wheel provides simple yet effective protection.

Order no. B6 601 0040

## Wheel bolts

Secure your light-alloy wheels.

Order no. B6 656 0677



## Hubcap with chrome star

The hubcap protects the wheel hub against dirt and is also elegantly eye-catching.

Order no. B6 647 0202



**Fibre-glass automatic guest umbrella**

This gust-resistant, extremely light-weight fibreglass automatic umbrella with teflon-coated polyester canopy and ergonomically designed rubber handle provides stylish protection against the elements. Size: approx. 125 cm.

Order no. B6 787 3064



**Sprinter key-ring lanyard**

Keep your keys secure, with the sporty Sprinter key-ring lanyard with reflective side seams.

Order no. B6 787 3068

*For further products from the Mercedes-Benz Sprinter Collection, please turn to pages 22-23.*



**Full wheel trim**

Brilliant silver finish: the 16" plastic full wheel trim fills two needs at once: it protects the wheel against dirt and at the same time enhances the appearance of your Sprinter.

Order no. B6 656 0733



**Quick-fit snow chains**

Exclusive to the Sprinter: the snow chains, of high-strength chromium-manganese micrograin stainless steel with reinforced chain links, provide excellent grip on snow and ice. Needless to say they are also quick and easy to fit.

See price list for order no.



**Mudflaps**

Made of long-life plastic, the mudflaps meet the highest standards of quality and functionality. They help to protect the body against dirt and scratching and at the same time improve visibility for following vehicles.

See price list for order no.



### C-rails

Basis for roof transport: the C-rails provide the basis for fitting roof racks and cargo baskets. They offer maximum roof loads of 150 kg for high-roof versions (LH2) and 300 kg for standard-roof versions (LH1).

See price list for order no.



### Basic carrier bars

The robust basic carrier bars can be mounted in any position on the C-rails. The strong, 30 x 30 mm steel bars always provide a level loading surface, and their plastic sheathing protects both the bars and the cargo. The maximum roof load per cross-bar is 50 kg (including bar). N.B.: observe overall maximum roof load.

*Cross-bar including 2 supports*

Order no. B6 656 0800

*3 cross-bars including 6 supports*

Order no. B6 656 0801



### High-standing bracket set

A quick and easy way of preventing all types of cargo mounted on the basic carrier bars from shifting sideways.

Order no. B6 656 0806



### Ladder rack

A wide variety of ladders can be safely transported on the basic carrier bars using the ladder rack.

Order no. B6 656 0807



### 1 | Cargo basket

Flexible load transport: the cargo basket can be used to transport many different types of cargo and can be adapted to any length of vehicle. The accessories sales consultant at your Mercedes-Benz service centre will be pleased to help you configure the right components for your vehicle.

See price list for order no.

### 2 | Loading roller

The hard-rubber loading roller allows you to slide even unwieldy items onto the roof rack or the roof carrier with ease. And without causing scratching.

Order no. B6 656 0816



*The accessories sales consultant at your Mercedes-Benz service centre will be pleased to help you configure the right components for your vehicle.*

## 12.11 p.m. Going up in the world



### **Lean-to ladder with transport securing system**

This innovative cargo-carrying accessory (patent pending) is always on board. The light-alloy ladder simply pulls out from the guide rails and can then be tilted down ready for use. The ladder facilitates safe loading and unloading of roof racks and cargo baskets under all circumstances. Of course, the ladder can also be attached elsewhere. On the vehicle flanks, for example. Here, a securing kit prevents the ladder from becoming unseated. After use, the ladder simply slides back into place and can be securely locked. Best of all, this does not restrict the load area in the slightest.

Order no. B6 656 0777

*Securing kit for ladder  
if basic roof rack is specified*

Order no. B6 656 0778

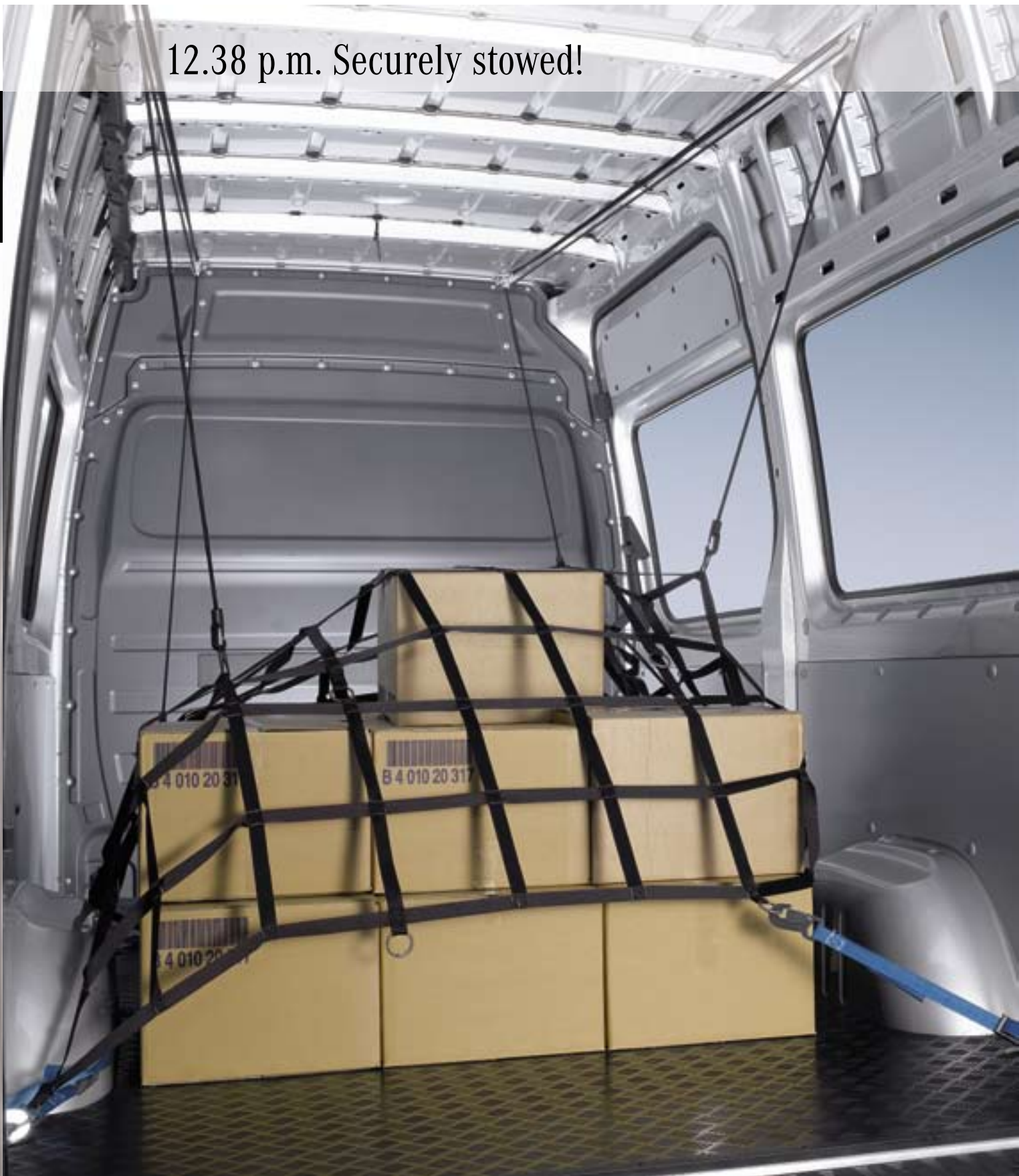
*Securing kit for ladder  
if cargo basket is specified*

Order no. B6 656 0779

12.38 p.m. Securely stowed!

CARGO

LOAD COMPARTMENT AND TRANSPORTATION



#### **Load-securing net**

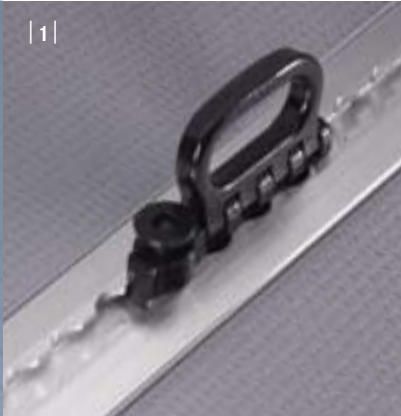
Load restraint made easy: the net is stowed in the roof, ready for use any time by means of a lift system. After loading, it can be spread over the cargo quickly, easily and without any tangles, then firmly attached to the load compartment floor by means of tensioning straps. Moreover, this can be done conveniently from the side or rear door, thanks to an intelligently designed cable system.

The package includes the net, lift system, straps and fasteners.

*Load-securing net for standard-length body*  
Order no. B6 656 1041

*Load-securing net for long body*  
Order no. B6 656 1042

*Load-securing net for extra-long body length*  
Order no. B6 656 1043



#### **Load-securing straps and rings**

The cargo strap system, which attaches easily to the prefitted lashing rails, provides an unbeatable and simple way of securing your cargo.

1 | *Two quadruple studs for floor rails, not including straps*

Order no. B6 656 0817

Not illustrated | *Four double-stud rings, without straps*

Order no. B6 656 0749

2 | *Ratchet strap with two double-stud rings*

Order no. B6 656 0748

#### **Non-slip mats**

Slip-resistant transport: the flush-fitting, modular mat set is an effective way of protecting the wood floor in the load compartment from dirt and damage. The load-securing rings in the load compartment remain fully accessible. The mats are secured to the floor in the door area by mouldings. The mat set, which is made of foam-backed vulcanite, also has vibration and sound-damping properties. It is easy to lay.

See price list for order no.



#### **Stowage box for pickup**

Extra capacity and extra protection: whether it be tools or personal items, the securely attachable stowage box (capacity 30 l) shields its contents from water spray. One shockproof plastic box can easily be mounted on each side of the pickup.

Order no. B6 656 0859





#### Sprinter model vehicles

Great stuff: our model vehicles contain a wealth of realistic detail. All models are elaborately manufactured using the latest computer technology and are painted in Mercedes-Benz paint colours.

*1:43 crewbus, hibiscus red | See illustration above*  
Order no. B6 600 0760

*1:43 crewbus, brilliant silver metallic*  
Order no. B6 600 0761

*1:43 panel van, carbon black metallic*  
Order no. B6 600 0762

*1:87 crewbus, hibiscus red*  
Order no. B6 600 0755

*1:87 crewbus, carbon black metallic*  
Order no. B6 600 0756

*1:87 panel van, jasper blue metallic*  
Order no. B6 600 0758

*1:87 pickup, calcite yellow*  
Order no. B6 600 0759



#### 1 | Hooded jacket

The super-soft, sporty-style hooded jacket is available in Atlantis blue, with large embroidered Sprinter lettering on the chest and Mercedes-Benz logo.

For order number and sizes, see price list

#### 2 | Reversible high-visibility safety jacket

This high-quality, sporty, wind and water-proof, breathable hooded safety jacket reverses in moments into a high-visibility safety jacket (orange with silver reflective strips) conforming to EU standard EN 471.

For order number and sizes, see price list.

#### 3 | Work gloves

Get stuck in with these robust work gloves made of skin-friendly natural grey split cowhide with a durable, air-permeable cotton back. They are available in Atlantis blue with Sprinter lettering and Mercedes-Benz logo.

Order no. B6 787 3060

5.49 p.m. You wear it well



**4 | Baseball cap**

High-quality double sandwich cap made of 100% brushed cotton with elaborately embroidered silver Sprinter lettering. In Atlantis blue, with peak underside in contrasting colour.

Order no. B6 787 3063

**Sprinter pin**

Neat as a pin: the photographic detail of this hand-made cast metal Sprinter pin with epoxy resin finish gives it lasting appeal.

Order no. B6 787 3073



**5 | Worker's polo shirt**

Sporty piqué polo shirt in Atlantis blue, with embroidered Sprinter lettering and Mercedes-Benz logo.

For order number and sizes, see price list

**6 | Messenger bag**

This contemporary, versatile messenger bag is made of hard-wearing canvas material. It is available in Atlantis blue, with Sprinter lettering and Mercedes-Benz logo.

Order no. B6 787 3082



**Three-hand gentlemen's watch**

All-time star: this gentlemen's watch with Miyota S13 quartz movement, scratch-proof domed mineral glass and matt polished stainless steel case is a masterpiece of precision engineering. The black matt deluxe dial with stylish hour markings makes a bold design statement. (2-year guarantee).

Order no. B6 787 3085



**Gentlemen's chronograph watch**

Elegant times: the chronograph features a Miyota OS20 quartz movement, a matt polished stainless steel case, water-resistant to 10 ATM, and domed mineral glass. The black matt deluxe dial with polished luminous hands and leather strap emphasises the clarity of the design. (2-year guarantee).

Order no. B6 787 3132

Please note: changes may have been made to the products since this brochure went to press (01.09.2008).The manufacturer reserves the right to make changes to the design, form, colour and specification during the delivery period, provided these changes, while taking into account the interests of the vendor, can be deemed reasonable with respect to the purchaser. Where the vendor or the manufacturer uses symbols or numbers to describe an order or the subject of an order, no rights may be derived solely from these. The illustrations may show accessories and items of optional equipment which are not part of standard specification. Colours may differ slightly from those shown in the brochure, owing to the limitations of the printing process. This brochure has been compiled by Daimler AG of Germany and is distributed internationally. It provides a general indication of the range of models, features, optional extras and/or colours available in various countries. Some of the models, features, optional extras and/or colours may not be available in your country or may only be available in a different specification. Additionally some models, features, optional extras and/or colours may only be available in combination with others. For current and more specific information in relation to the range of models, features, optional extras and/or colours available in your country, and their pricing, you should contact your nearest authorised Mercedes-Benz Passenger Car Dealer.